**TROUGH VIBRATOR TMV**

TROWAL MASS FINISHING

Trough Vibrators – Model Range TMV

Large parts?

Trowal trough (or tub) vibrators are used for finishing of mid to large size parts. Normally the parts to be processed are placed into the tub loose where they can rotate free with the media mass.

Delicate parts?

Delicate parts are either clamped with special fixturing devices or processed individually in separate chambers separated by special dividers fitted into the tub. This type of processing prevents impingement and parts damage during the finishing process.

Universal applications

Trough vibrators are “all-round” mass finishing machines. They are used for

- Deburring
- Radiusing
- Surface smoothing
- Surface polishing
- De-greasing
- Surface cleaning
- Pickling, de-scaling, de-rusting



Top performance!

The specially developed Multivib drive system offers especially intensive finishing over the complete work bowl length without any "dead" areas. No central lubrication required: The imbalance units are lifetime lubricated!

Ball burnishing

Because of their powerful vibratory drive system TMV are ideal machines for ball burnishing and pressure deburring with steel media.

Modular model range

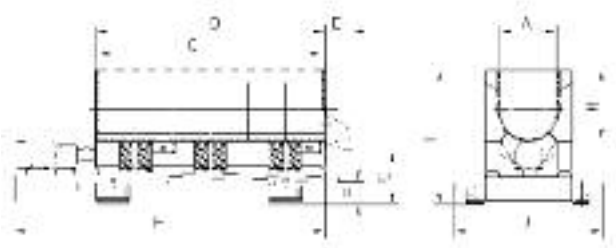
The TMV series is designed as a modular system with

- work bowl widths of 410, 550, 650 and 850 mm and

- work bowl lengths of 1750, 2600, 3450, 4300, 5150, 6000 and 6850 mm

Noise protection

For the TMV trough vibrators noise reducing lids and complete sound enclosing cabins are available. The sound enclosing cabins tightly fit the trough vibrator with minimum space requirements. With larger trough vibrators the sound enclosing cabins are designed wider for easy access for maintenance.



| | 175/41 | 260/41 | 345/41 | 175/55 | 260/55 | 345/55 | 175/65 | 260/65 | 345/65 | 175/85 | 260/85 | 345/85 |
|------------------------------------|--------|--------|--------|--------|--------|--------|--------|--------|--------|--------|--------|--------|
| Power standard version (kW) | 5.5 | 7.5 | 7.5 | 5.5 | 7.5 | 11 | 5.5 | 7.5 | 11 | 11 | 15 | 18.5 |
| Power ball burnishing version (kW) | 7.5 | 11 | 15 | 11 | 15 | 18.5 | 15 | n.l. | n.l. | 22 | n.l. | n.l. |
| No of Flyweight Housings | 2 | 3 | 4 | 2 | 3 | 4 | 2 | 3 | 4 | 2 | 3 | 4 |
| Lining thickness (mm) | 15 | 15 | 15 | 22 | 22 | 22 | 25 | 25 | 25 | 25 | 25 | 25 |
| Usable volume (l) | 210 | 310 | 410 | 375 | 555 | 735 | 525 | 775 | 1,030 | 895 | 1,175 | 1,760 |

n.a.= not available; Standard Speed 1500 min⁻¹; Optional Infinitely Variable Speed Control; Speed Range 1000-2800 min⁻¹

| | 175/41 | 260/41 | 345/41 | 175/55 | 260/55 | 345/55 | 175/65 | 260/65 | 345/65 | 175/85 | 260/85 | 345/85 |
|---|---------|---------|---------|---------|---------|---------|---------|---------|---------|---------|---------|---------|
| A | 410 | 410 | 410 | 550 | 550 | 550 | 650 | 650 | 650 | 850 | 850 | 850 |
| B | 515 | 515 | 515 | 661 | 661 | 661 | 785 | 785 | 785 | 885 | 885 | 885 |
| C | 1,696 | 2,546 | 3,396 | 1,682 | 2,532 | 3,382 | 1,676 | 2,526 | 3,376 | 1,676 | 2,526 | 3,376 |
| D | 1,750 | 2,600 | 3,450 | 1,750 | 2,600 | 3,450 | 1,750 | 2,600 | 3,450 | 1,750 | 2,600 | 3,450 |
| E | 306 | 306 | 306 | 306 | 306 | 306 | 306 | 306 | 306 | 306 | 306 | 306 |
| F | ca. 450 | ca. 420 | ca. 435 | ca. 380 | ca. 365 | ca. 370 | ca. 370 | ca. 350 | ca. 340 | ca. 360 | ca. 340 | ca. 360 |
| G | 670 | 676 | 670 | 471 | 471 | 471 | 583 | 599 | 587 | 580 | 580 | 580 |
| H | 2,560 | 3,535 | 4,385 | 2,560 | 3,580 | 4,430 | 2,670 | 3,520 | 4,435 | 2,700 | 3,535 | 4,420 |
| I | 1,320 | 1,320 | 1,320 | 1,390 | 1,390 | 1,390 | 1,500 | 1,500 | 1,500 | 1,600 | 1,600 | 1,600 |
| J | 1,200 | 1,380 | 1,380 | 1,580 | 1,580 | 1,580 | 1,680 | 1,680 | 1,680 | 1,880 | 1,880 | 1,880 |

Dimensions (in mm)

**WALTHER
TROWAL**!

Walther Trowal GmbH & Co. KG

Rheinische Straße 35-37 | D-42781 Haan

Tel. +49(0)21 29-5 71-0 | Fax +49(0)21 29-5 71-2 25

info@walther-trowal.com | www.walther-trowal.com